

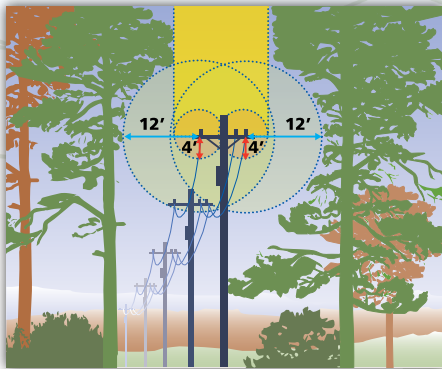
Community Wildfire Safety Program

Vegetation Management

Liberty Utilities' crews are deployed year-round throughout the region to inspect trees and vegetation in the vicinity of power lines. In order to comply with state law and safety best practices, any trees or branches that have grown too close to power lines will be trimmed or removed to mitigate any wildfire risk.

Liberty Utilities' vegetation management crews canvas the entire service area on a pre-planned rotation. The majority of the tree and vegetation management work is executed from May through October, but work continues through the winter months and can include the daunting task of removing vegetation debris after storms.

When trees are identified for trimming, crews are instructed to prune branches and vegetation back to a minimum of 12 feet from the power lines to ensure adequate



“...any trees or branches that have grown too close to power lines will be trimmed or removed to mitigate any wildfire risk”.

clearance is maintained over the maintenance cycle period. Hazard trees—which are often dead, diseased or structurally unsound—are also identified for removal. These trees can be far away from the power line, but have the potential to fall into the power line due to their related defects. When trees need to be removed, Liberty Utilities and its contractors follow a notification process so that the property owner is aware of the work prior to its completion.

In addition to the routine vegetation maintenance program, Liberty Utilities has an emergency program to immediately remove trees that are an imminent threat to infrastructure. Throughout the Lake Tahoe region, Liberty Utilities has increased its vegetation management program investment from \$2.5 to \$4 million annually to ensure all trees and vegetation near power lines are trimmed or removed within the appropriate timeframe.

Tree trimming and removal services performed by Liberty Utilities are done at no cost to the property owner. Limbs, slash and brush will be chipped and hauled or broadcasted on-site. The remaining wood (trunk of the tree) will be left with the property owner.

If you have any questions about Liberty Utilities' Vegetation Management Program or would like to report a tree/vegetation you feel may be a hazard, please call [530-546-1787](tel:530-546-1787).

De-energization

De-energization is the process by which an electric utility may proactively turn the power off in certain areas when and where weather conditions create a high fire risk. The practice of de-energization, which is becoming more and more frequent, is encouraged by the California Public Utility Commission (CPUC) as a safety best practice.

“The practice of de-energization, which is becoming more and more frequent...”

Liberty Utilities will be deploying weather stations throughout the local service area, and will collaborate with the National Weather Service in Reno, NV, and local fire officials to monitor local weather conditions. Specific weather conditions that could trigger a de-energization event are humidity or

extreme wind gusts. In addition to Liberty Utilities' outbound messaging and website information, Liberty Utilities encourages the public to follow the utility on [Twitter via @LibertyUtil_CA](#) or [Facebook via @LibertyUtilitiesLT](#) where they can also get information on power outages, planned or unplanned. Once the need to de-energize has been decided, Liberty Utilities will work with its media, public safety and government partners to communicate the details of the planned outage and prepare the public.

www.libertyutilities.com

 [@LibertyUtilitiesLT](#)

 [Twitter@LibertyUtil_CA](#)



Liberty Utilities®