

April 2013



Liberty UtilitiesSM

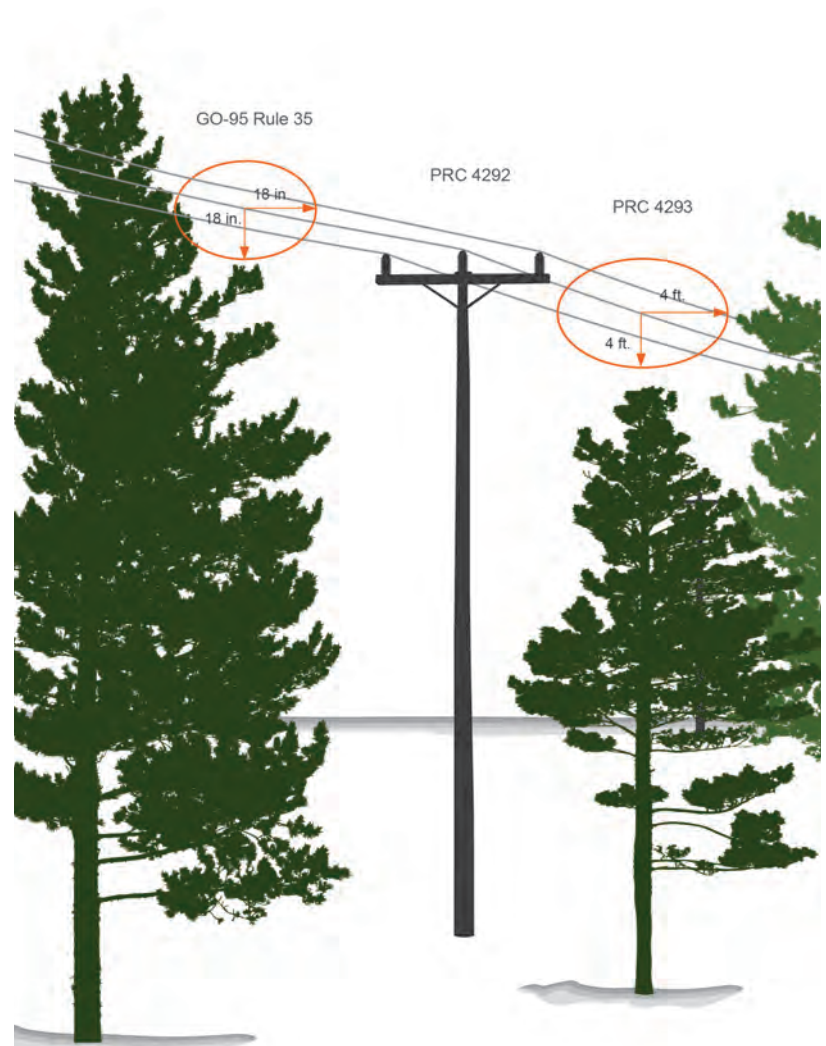
California Pacific Electric Company

Vegetation Management

Liberty Utilities is committed to providing a safe and reliable electrical system to our customers by performing vegetation management as required by CalFire and the California Public Utilities Commission. Please help us prevent electrical outages, fires and other public safety hazards by observing the following:

Tree Clearance Requirements

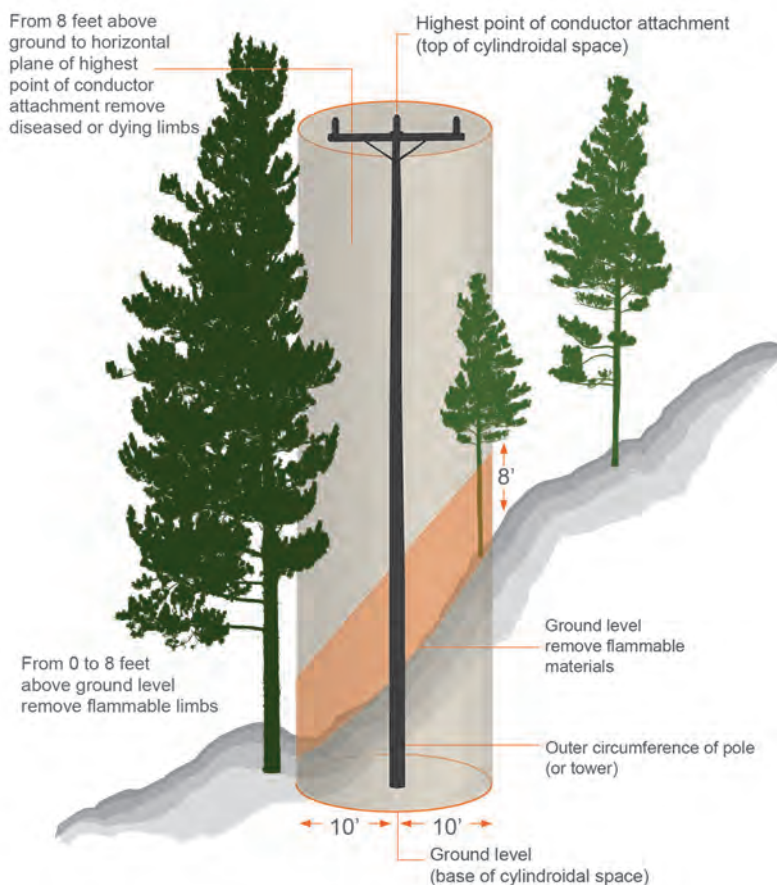
- Trees coming in contact with electrical lines represent one of the largest causes of power outages in California.
- Trees coming in contact with high voltage power lines can act as an ignition source for fire.
- A minimum 4 feet of clearance from vegetation to energized equipment is required during fire season.
(Public Resources Code 4293)
- A minimum of 18" of clearance between vegetation and energized equipment must be maintained at all times of the year.
(General Order 95, Rule 35)
- Trees with the potential to fall into utility lines must be removed.



Firebreak Clearance Requirements

- All flammable vegetation and debris must be cleared around poles containing specific types of electrical equipment during fire season.
- Clearance is required because certain types of pole-mounted equipment have the potential to spark during a fault in the electrical system and can cause a fire.
- Minimum ground clearance around a pole is 10 feet circumference. Ground clearance must be maintained for a minimum of 8 vertical feet.

(Public Resources Code 4292)



Liberty Utilities appreciates the partnership with our customers in observing these important vegetation management practices so we can keep our communities safe, especially during the upcoming fire season.

To submit a tree trimming request, please contact us:

Online at http://libertyutilities.com/west/safety/tree_trimming.php

E-mail at catree@libertyutilities.com

Phone at Customer Service Toll Free at (800) 782-2506

Additional information regarding utility vegetation management in California can be obtained from the following sources:

http://cdfdata.fire.ca.gov/fire_er/fpp_engineering_view?guide_id=15

http://www.cpuc.ca.gov/gos/GO95/go_95_rule_35.html

http://libertyutilities.com/west/safety/vegetation_management.html



Liberty UtilitiesSM

California Pacific Electric Company

Liberty Utilities North Lake Tahoe
701 National Ave.
Tahoe Vista, CA 96148

1-800-782-2506
www.libertyutilities.com

Liberty Utilities South Lake Tahoe
933 Eloise Ave.
South Lake Tahoe, CA 96150