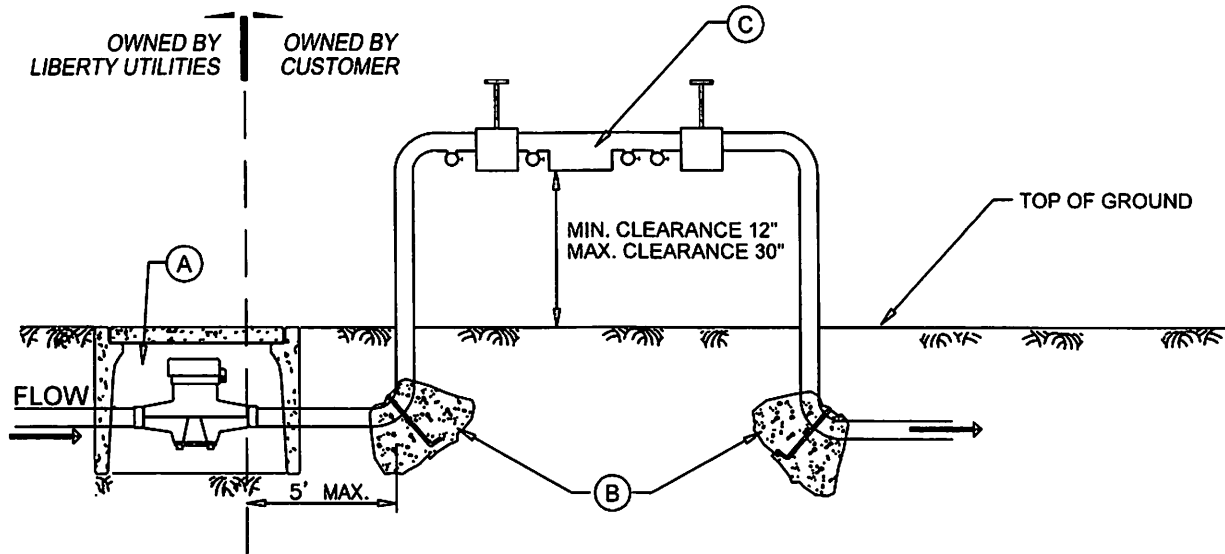


LIBERTY UTILITIES STANDARDS



LEGEND

(A) WATER METER INSIDE METER BOX

(B) THRUST BLOCKS (AS NEEDED) PER STD DWG LPW - 107 (3" OR LARGER)

(C) A REDUCED PRESSURE PRINCIPLE (RP) BACKFLOW ASSEMBLY SHALL MEAN AN ASSEMBLY CONTAINING TWO INDEPENDENTLY ACTING APPROVED CHECK VALVES TOGETHER WITH A HYDRAULICALLY OPERATING MECHANICALLY INDEPENDENT PRESSURE DIFFERENTIAL RELIEF VALVES LOCATED BETWEEN THE CHECK VALVES. THE (RP) ASSEMBLY SHALL BE LISTED ON THE USC FOUNDATION FOR CROSS CONNECTION CONTROL AND HYDRAULIC RESEARCH LIST OF APPROVED ASSEMBLIES.

NOTES:

1. ALL MATERIALS SHALL BE ON THE LIBERTY UTILITIES APPROVED MATERIALS LIST OR PRIOR WRITTEN APPROVAL SHALL BE OBTAINED FROM LIBERTY UTILITIES.
2. THE (RP) ASSEMBLY SHALL BE AS CLOSE TO THE WATER METER AS POSSIBLE
3. THE BACK FLOW ASSEMBLY SHALL BE TESTED BY A CERTIFIED TESTER LICENSED TO CONDUCT BUSINESS IN LOS ANGELES COUNTY UPON INSTALLATION OF THE ASSEMBLY.
4. TEST FORM TO BE SUBMITTED TO LIBERTY UTILITIES CROSS CONNECTION CONTROL SPECIALIST BEFORE WATER SERVICE IS TURNED ON.
5. NO CONNECTIONS OR TEES ARE PERMITTED BETWEEN METER AND BACKFLOW ASSEMBLY.
6. IT IS RECOMMENDED THAT SIZES 3" AND LARGER HAVE ADDITIONAL PIPE SUPPORT.
7. IT IS RECOMMENDED THAT THE BACKFLOW ASSEMBLY BE THE SAME SIZE OR ONE SIZE LARGER THAN THE METER.

STD. DWG. No. LPW - 122B

LIBERTY UTILITIES (PARK WATER) CORP.

9750 WASHBURN ROAD DOWNEY, CA 90241

**TYPICAL
REDUCED PRESSURE BACKFLOW
ASSEMBLY**

DRAWN: GARY AKOPYAN

APPROVED: JANELLE RELLOSA

REV:

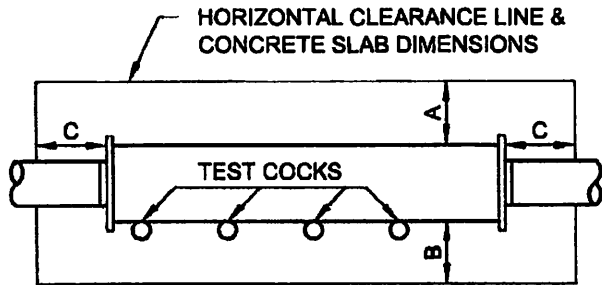
DATE:

DATE: 02/25/2020

DATE:

CHANGE:

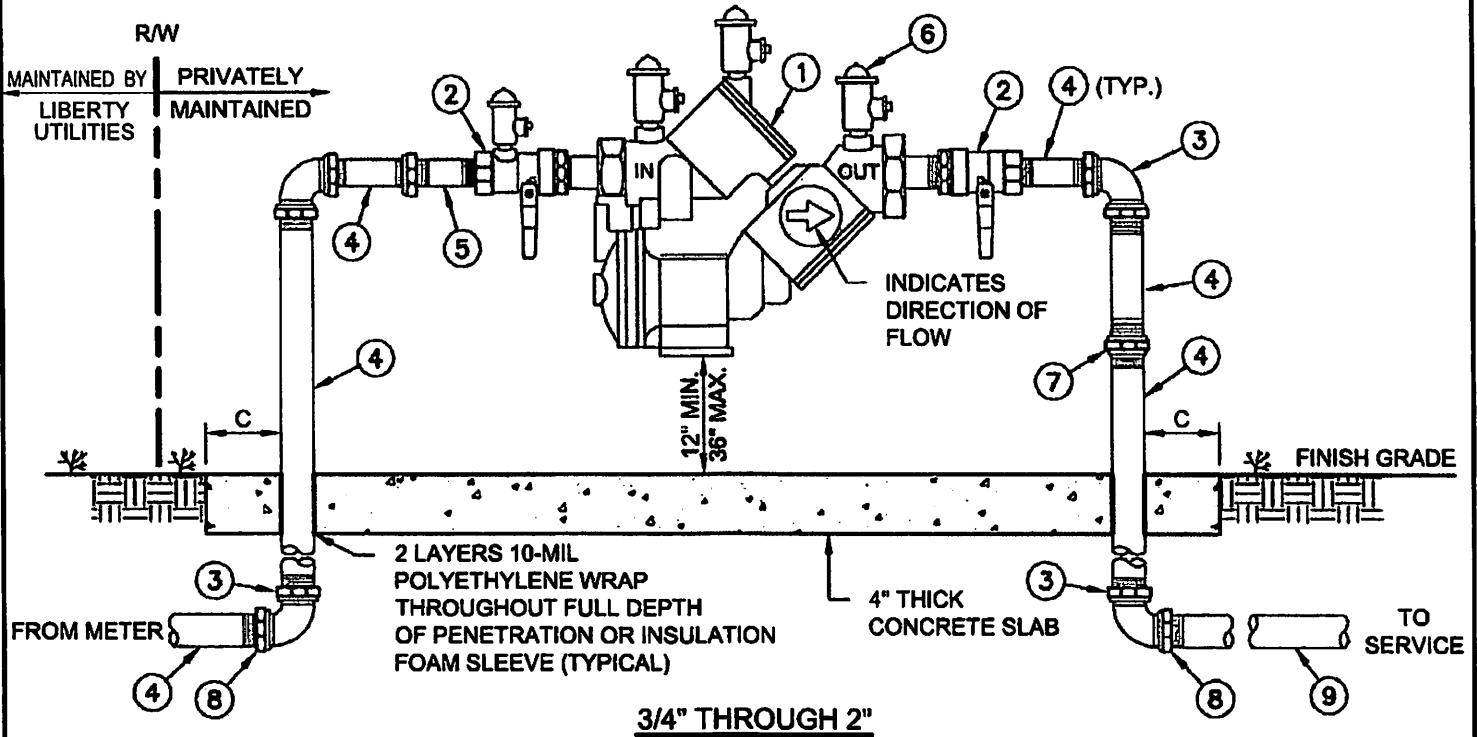
LIBERTY UTILITIES STANDARDS



ADEQUATE CLEARANCE MUST BE PROVIDED TO PERMIT TESTING AND REPAIR WORK

| MINIMUM CLEARANCE | | | |
|-------------------|-----|-----|-----|
| SIZE | A | B | C |
| 1"-3" | 12" | 18" | 12" |
| 4"& UP | 24" | 24" | 12" |

REQUIRED MIN. 2 FEET CLEARANCE WITH BLOCK WALL



3/4" THROUGH 2"

| ITEM | QTY | DESCRIPTION | REMARKS |
|------|-----|--|-----------------------------------|
| (1) | 1 | REDUCED PRESSURE PRINCIPLE BACKFLOW DEVICE | MUST BE STATE & USC APPROVED TYPE |
| (2) | 2 | BALL VALVE | USC APPROVED (BALL VALVE) |
| (3) | 4 | 90° ELBOW, BRASS OR COPPER | COPPER TYPE L, HARD |
| (4) | 2 | RISER AND NIPPLES, BRASS OR COPPER | WITH THREADED BRASS UNIONS |
| (5) | 1 | PRESSURE REDUCING AND/OR RELIEF VALVE | FOR PRESSURE IN EXCESS OF 80 PSI |
| (6) | 1 | BRASS PLUG / TEST PORT | |
| (7) | 1 | THREADED BRASS UNION OR COPPER UNION | |
| (8) | 2 | BRASS OR COPPER MALE ADAPTOR | FEMALE THREADED x MALE SLIP |
| (9) | 1 | DIP PIPING | AS REQUIRED BY LIBERTY UTILITIES |

NOTES:

- BOTTOM OF UNIT SHALL BE NO LESS THAN 12-INCHES AND NO MORE THAN 36-INCHES ABOVE FINISH GRADE OF THE SURROUNDING GROUND.
- THE DEVICE MUST BE INSPECTED AND TESTED IMMEDIATELY AFTER INSTALLATION. LIBERTY UTILITIES FOR INSPECTION & TESTING.
- CONCRETE THRUST BLOCK AND/OR ABOVE GROUND SLAB REQUIRE INSPECTION BEFORE CONCRETE IS POURED.
- MATERIALS SHALL BE SELECTED FROM THE LU ACCEPTED MATERIALS GUIDELINE.
- USE ONLY TEFLON TAPE FOR PIPE THREADS.
- PIPING SHALL BE PAINTED BLUE FOR POTABLE WATER AND PURPLE FOR RECYCLED WATER.
- BRASS PLUGS ARE TO BE USED.

STD. DWG. No. LPW - 124 (B)

LIBERTY UTILITIES (PARK WATER) CORP.
9750 WASHBURN ROAD DOWNEY, CA 90241

TYPICAL
BACKFLOW PREVENTION ASSEMBLY
3/4" THROUGH 2"
ABOVE GROUND INSTALLATION

DRAWN: GARY AKOPYAN

APPROVED: JANELLE RELLOSA

REV:

DATE:

DATE: 02/24/20

DATE: 02/24/20

CHANGE: